

Road-16

The dynamic of performance is freedom(the conductor's) discretion.

Time cancels everything

c major; c d e f g a b

Baritone; C clef on 5th line (& Solo; singer).

soprano; C clef on 1st line, alto; C clef on 3rd line.

bass; F clef on 4th line, tenor; C clef on 4th line.

Yukio Yoshida

Op.107 09/01/2019

Baritone Sol; Voice Words

[Time cancels everything]

1)
The footprints that existed
Disappear with death
Loneliness, sadness, tears shed,
Disappears instantly with death

2)
Everything was alive, it was
Without knowing why
Disappear and disappear

3)
Eternal lasting is not allowed
Only now will last
Constantly only now appears
Only now continues

The foot-prints that ex - isted Dis - appear with death Loneliness,

7

sadness, tears shed, Dis - appears instantly with death. n_ Every - thing was alive,

Chorus Only Chorus (for bars 11-14), Do not play with instruments.

11

A - gnus Dé - i, dó - na é - is ré - qui - em.
 A - gnus Dé - i, dó - na é - is ré - qui - em.
 A - gnus Dé - i, dó - na é - is ré - qui - em.
 A - gnus Dé - i, dó - na é - is ré - qui - em.

15

it was With - out know-ing why Dis - appear and disappear. m_

ppp *pp*

pp *ppp*

19



Eter - nal last - ing is not al - lowed Only now will last

23


Con - stantly only now ap - pears





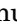
27

Only now con - tinues.

About location  (longa) and  (breve)

Please, Breath of longa and breve do in the members alternating (But, like Don't stand out).

At location , *Always, please look at the conductor(or baton).*

, , , ,  (pronunciation-symbol); *To clearly distinguish pronunciation.*

Chorus Word (from Réquiem); ***Agnus Déi, dóna éis réquiem.***

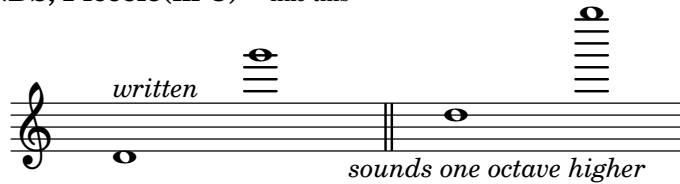
Note (by Yukio Yoshida)

Since, this is Sure!(especially; at "Stage Position")

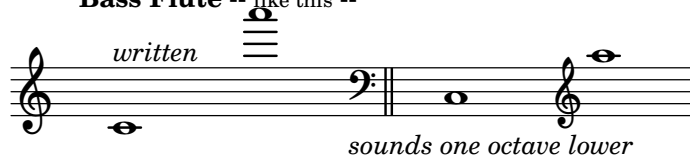
INSTRUMENT RANGES

About; Some of Instruments; there is a difference between writing-note and real-note. for instance:

WOODWINDS; Piccolo(in C) -- like this --



Bass Flute -- like this --



Stage Position; (This arrangement--with the instrument needles column below--)

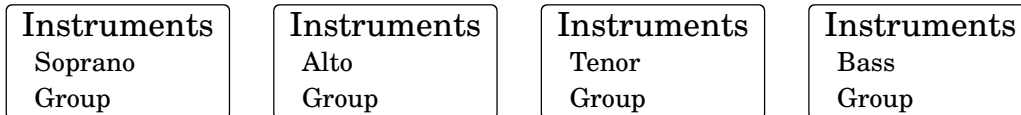
About the Chorus; (For instsnce)



since, They must be reverse for Instrument's arrangement

About Position of Sololist is placed freely(on the stage)

About Instrument arrangement; (must be reverse for Chours's position)



Conductor

..... Audience seats

ALL

SOURCE
CODE

As all; See! (HTML) @menu
<https://www.sheet-poem.com/poem/html/2019/road-16.html>