

Agnus 2019

Letters

The dynamic of performance is freedom(the conductor's) discretion.

Voic-Word; from
Réquiem's(Agnus Dei)

*Agnus Déi, * qui tóllis peccáta mún-di:
dóna éis réquiem.*

*Agnus Déi, * qui tóllis peccáta mún-di:
dóna éis réquiem.*

*Agnus Déi, * qui tóllis peccáta mún-di:
dóna éis réquiem*

*** sempitérnam.*

*(* ; Change of the chorus(Pre-singing) and chorus.)*

*(**; All choir groups sing together.)*

Reference Sources; (Agnus Déi = the Lamb of God)

John 1

.....
.....

Jesus the Lamb of God.

²⁹ The next day John saw Jesus coming toward him and said,
Look, ``the Lamb of God.'' who takes away the sin of the world!

.....

From Réquiem-ceremony

Agnus Déi**c major**(*c d e f g a b*)

soprano; C clef on 1st line, alto; C clef on 3rd line.

bass; F clef on 4th line, tenor; C clef on 4th line.

Yukio Yoshida

Op.109 08/01/2019

prayer(as inner harmony)

Musical score for the 'prayer' section, showing staves for soprano, alto, tenor, and bass, with corresponding voice parts in blue. The score is in 3/2 time and C major. The key signature is one sharp (F#). The tempo is marked 'prayer(as inner harmony)'. The score consists of two measures. The first measure is in 3/2 time, and the second measure is in 4/4 time. The soprano part has a whole note G4 in the first measure and a whole note G4 in the second measure. The alto part has a whole note G4 in the first measure and a whole note G4 in the second measure. The tenor part has a whole note G4 in the first measure and a whole note G4 in the second measure. The bass part has a whole note G4 in the first measure and a whole note G4 in the second measure. The voice parts in blue are identical to the instrumental parts.

Musical score for the 'Agnus Déi' section, showing staves for soprano, alto, tenor, and bass, with corresponding voice parts in blue. The score is in 3/2 time and C major. The key signature is one sharp (F#). The tempo is marked 'Tutti'. The score consists of two measures. The first measure is in 3/2 time, and the second measure is in 4/4 time. The soprano part has a whole note G4 in the first measure and a whole note G4 in the second measure. The alto part has a whole note G4 in the first measure and a whole note G4 in the second measure. The tenor part has a whole note G4 in the first measure and a whole note G4 in the second measure. The bass part has a whole note G4 in the first measure and a whole note G4 in the second measure. The voice parts in blue are identical to the instrumental parts. The lyrics are: *qui tól - lis* for the soprano and alto parts, and *A - gnus Dé - i,* for the tenor and bass parts. There are 'Two-Solo' markings in red boxes above the tenor and bass parts in the first measure.

public Domain

pec - cá - ta mún - di: dó - na é - is ré - qui - em.

pec - cá - ta mún - di: dó - na é - is ré - qui - em.

Tutti

Tutti

ré - qui - em.

ré - qui - em.

A - gnus Dé - i, qui tól - lis pec - cá - ta mún - di: tól - lis pec - cá - ta mún - di:

A - gnus Dé - i, qui tól - lis pec - cá - ta mún - di: tól - lis pec - cá - ta mún - di:

A - gnus Dé - i, qui tól - lis pec - cá - ta mún - di: tól - lis pec - cá - ta mún - di:

A - gnus Dé - i, qui tól - lis pec - cá - ta mún - di: tól - lis pec - cá - ta mún - di:

Tutti

Tutti

qui tól - lis pec - cá - ta mún - di:
qui tól - lis - lis pec - cá - ta mún - di:

10

do - na e - is re - qui - em.

do - na e - is re - qui - em.

do - na e - is re - qui - em.

do - na e - is re - qui - em.

14

do - na e - is re - qui - em.

16

Two-Solo

A - gnus Dé - i,

Two-Solo

A - gnus Dé - i,

Tutti

qui - tól - lis

Tutti

qui - tól - lis

17

pec - cá - ta mún - di: dó - na éis ré - qui - em.
 pec - cá - ta mún - di: dó - na éis ré - qui - em.

Tutti



19

sem - - pi - tér - nam.
 sem - - pi - tér - nam.


sem - - pi - tér - nam.
 sem - - pi - tér - nam.

sem - - pi - tér - nam.
 sem - - pi - tér - nam.

sem - - pi - tér - nam.
 sem - - pi - tér - nam.



About location;  (longa) and  (breve)

Please, Breath of longa and breve do in the members alternating(But, like Don't stand out).

At location  ; Always, please look at the conductor(or baton).

α , ο (pronunciation symbol); To clearly distinguish pronunciation.

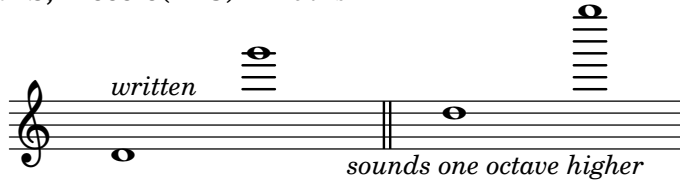
Player ; Focus on pursuit of the mind, not sounds.

At location(**note-head**)  ,  ; The apportionment must be decided by you .

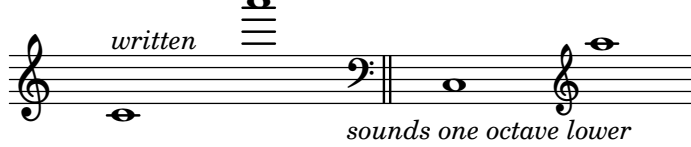
INSTRUMENT RANGES

About; Some of Instruments; there is a difference between writing-note and real-note. for instance:

WOODWINDS; Piccolo(in C) -- like this --



Bass Flute-- like this --



Stage Position; *(This arrangement--with the instrument needles column below--)*

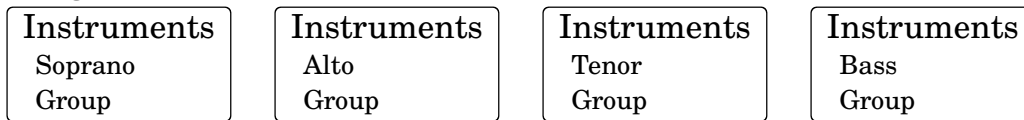
About the Chorus; *(For instnsnce)*

Bass
Tenor
Alto
Soprano

since, They must be reverse for Instrument's arrangement

About Position of Sololist is placed freely(on the stage)

About Instrument arrangement; *(must be reverse for Chours's position)*



Conductor

..... Audience seats

If you can do it, please running on;

As it is the lighting of the audience's Seats(Do not turn off even when the play began). *When play began, lighting the stage (rather than the audience's) more brightly.*

ALL

SOURCE
CODE

As all; See! (HTML) @menu
<https://www.sheet-poem.com/poem/html/2019/2.24.0/agnus/agnus-2019.html>