

Cello Suite II

"Sechs Suiten für Violoncello"

Johann Sebastian Bach (1685-1750)
BWV 1008

Prélude

4

7

10

13

16

19

22

25

28

31

Musical score for a piece in bass clef, measures 34-60. The score consists of seven staves of music. The key signature is one flat (B-flat). The time signature is not explicitly shown but appears to be 3/4. The music features a variety of rhythmic patterns, including eighth and sixteenth notes, often beamed together. There are several accidentals, including sharps and flats, and some notes are marked with a 'b' (basso). The piece concludes with a double bar line at measure 60.

Allemande

BWV 1008

Musical score for Allemande in bass clef, measures 1-6. The key signature is one flat (B-flat) and the time signature is common time (C). The score consists of three staves of music. The music is characterized by a steady eighth-note accompaniment in the left hand and a more melodic line in the right hand. There are several accidentals, including sharps and flats, and some notes are marked with a 'tr' (trill). The piece concludes with a double bar line at measure 6.

9 *tr*

11 *tr*

14

16 *tr*

19

22

Courante

BWV 1008

4

8

11

14

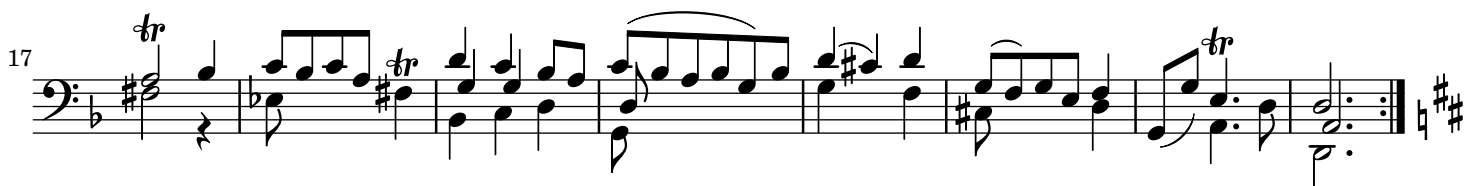
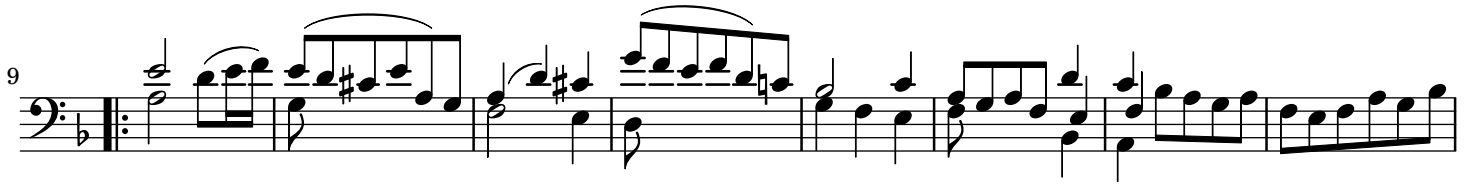
Musical score for a piece in bass clef, measures 4-30. The key signature has one flat (B-flat). The score consists of five staves of music. The first staff (measures 4-19) features a melodic line with eighth and sixteenth notes, including a repeat sign at the beginning. The second staff (measures 20-23) continues the melodic line with slurs. The third staff (measures 24-26) shows a change in the melodic pattern. The fourth staff (measures 27-29) continues with similar rhythmic patterns. The fifth staff (measures 30-31) concludes the section with a double bar line and repeat dots.

Sarabande

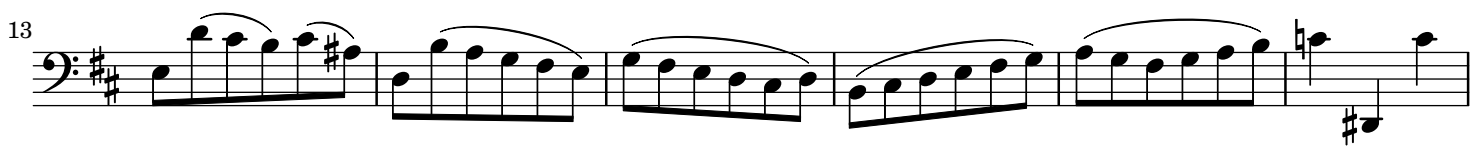
BWV 1008

Musical score for Sarabande in bass clef, measures 1-24. The key signature has one flat (B-flat) and the time signature is 3/4. The score consists of five staves of music. The first staff (measures 1-4) begins with a melodic line and a trill (tr) over a dotted quarter note. The second staff (measures 5-9) continues the melody with trills. The third staff (measures 10-14) features a repeat sign and trills. The fourth staff (measures 15-19) continues with trills and a key signature change to two flats (B-flat and E-flat) in measure 17. The fifth staff (measures 20-24) concludes the piece with trills and a final double bar line.

Menuet 1



Menuet 2



7

14

21

27

40

46

53

59

65

71