

Cello Suite II

"Sechs Suiten für Violoncello"

Johann Sebastian Bach (1685-1750)
BWV 1008

Prélude

4

7

10

13

16

19

22

25

28

31

Musical score for a piece in G minor, measures 34-66. The score is written in bass clef with a key signature of one flat (B-flat). The piece features a continuous eighth-note pattern in the left hand, with various melodic lines in the right hand. Measure 34 starts with a G2 octave pedal point. Measure 37 has a B-flat accidental on the G4 note. Measure 40 has a G-sharp accidental on the G2 note. Measure 44 has a G-sharp accidental on the G2 note. Measure 47 has a G-sharp accidental on the G2 note and a fermata on the G4 note. Measure 51 has a B-flat accidental on the B3 note. Measure 54 has a G-sharp accidental on the G2 note. Measure 57 has a B-flat accidental on the B3 note and a G-sharp accidental on the G2 note. The piece ends with a double bar line at measure 66.

Allemande

BWV 1008

Musical score for Allemande in G minor, BWV 1008, measures 1-6. The score is written in bass clef with a key signature of one flat (B-flat) and a common time signature (C). The piece features a continuous eighth-note pattern in the left hand, with various melodic lines in the right hand. Measure 1 starts with a G2 octave pedal point. Measure 3 has a B-flat accidental on the B3 note. Measure 6 has a G-sharp accidental on the G2 note. The piece ends with a double bar line at measure 6.

8

8

10

10

13

13

16

16

19

19

22

22

Courante

BWV 1008

1

4

4

8

8

11

11

14

14

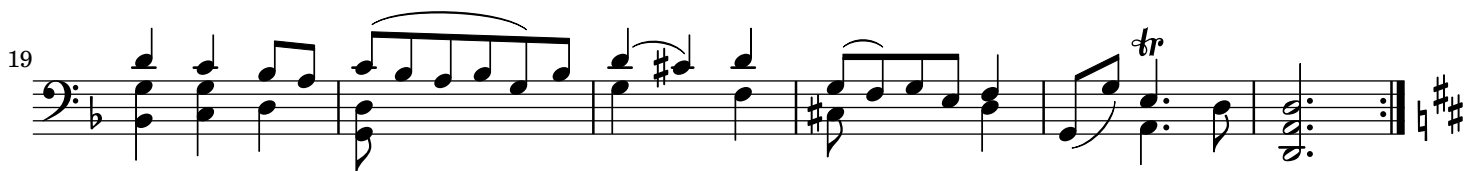
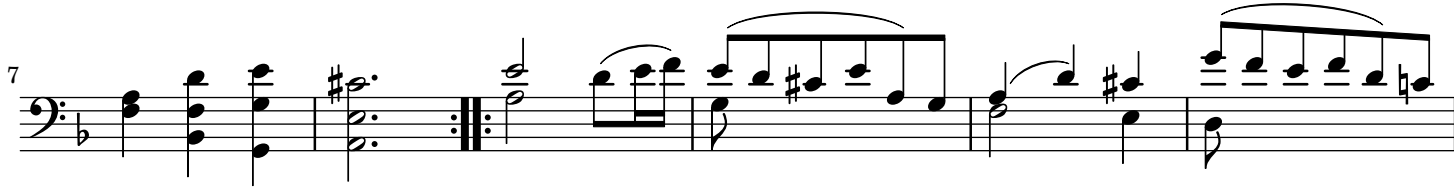
Musical score for a piece in bass clef, measures 4-30. The key signature has one flat (B-flat). The score consists of five staves of music. The first staff (measures 4-19) features a melodic line with eighth and sixteenth notes, including a repeat sign at the beginning. The second staff (measures 20-23) continues the melodic line with slurs. The third staff (measures 24-26) shows a change in the melodic pattern. The fourth staff (measures 27-29) continues with similar rhythmic patterns. The fifth staff (measures 30-31) concludes the section with a double bar line and repeat dots.

Sarabande

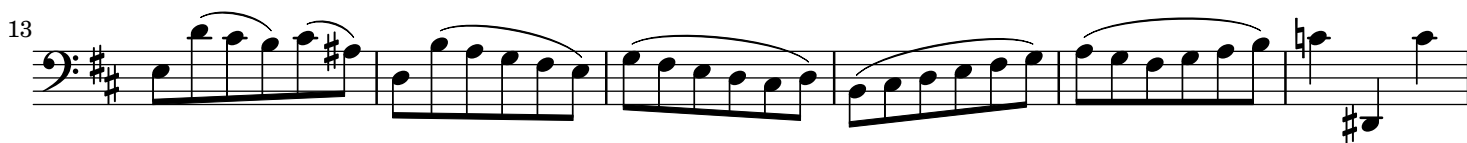
BWV 1008

Musical score for Sarabande in bass clef, measures 1-25. The key signature has one flat (B-flat) and the time signature is 3/4. The score consists of five staves of music. The first staff (measures 1-5) begins with a melodic line and a trill (tr) over a dotted quarter note. The second staff (measures 6-10) continues the melody with slurs and a trill. The third staff (measures 11-15) features a repeat sign and a trill. The fourth staff (measures 16-20) continues with slurs and a trill. The fifth staff (measures 21-25) concludes the piece with a double bar line and repeat dots.

Menuet 1



Menuet 2



6
Gigue

BWV 1008

